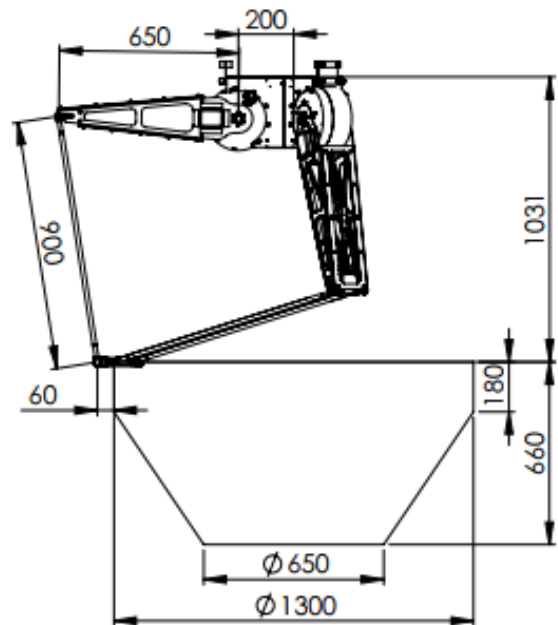
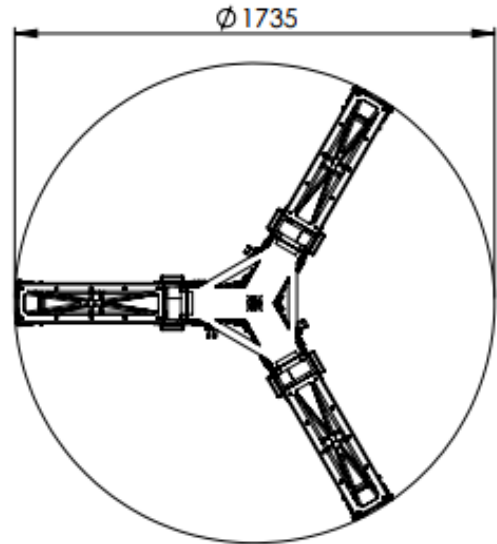
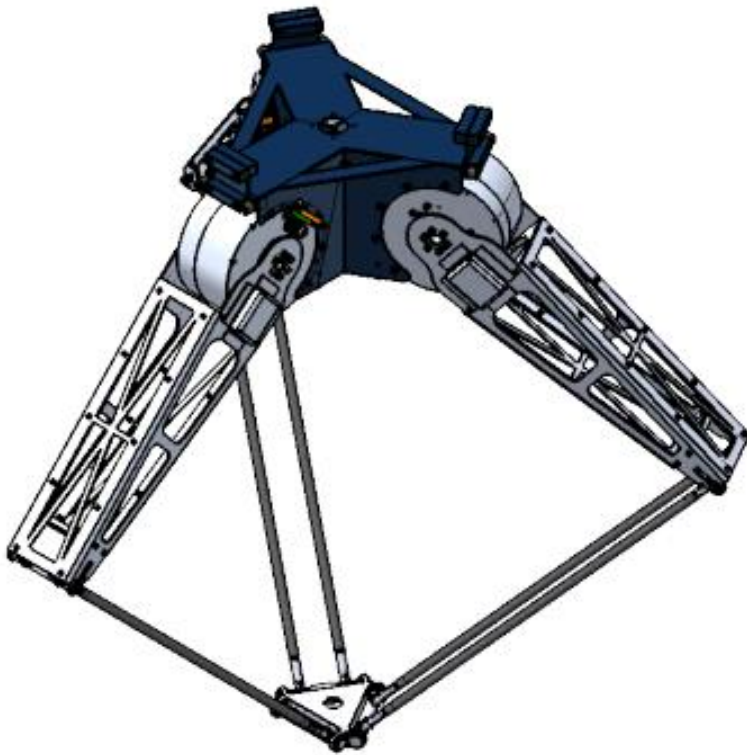




## DIRECT-DRIVE DELTA ROBOT

TYPE: BROM-DR-105-6590



### DIRECT DRIVE ADVANTAGES

- 1:1 transmission
- High mechanical efficiency
- High servo stiffness
- Reduced wear
- Maintenance friendly

### EMPLOYABILITY

- Food industry
- Pharmacy
- Agri industry
- PCB pick and place
- Packaging industry
- Educative
- Versatile

### ROBOT ADVANTAGES

- Universal gripper possibility
- Low maintenance
- Modular construction
- Independent of control hardware

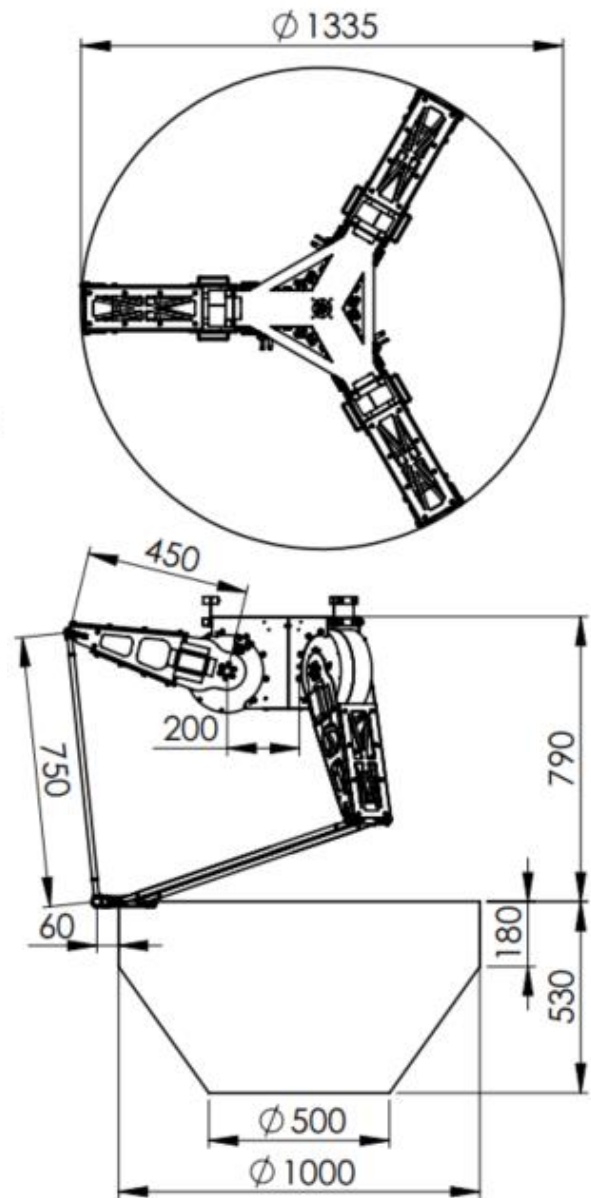
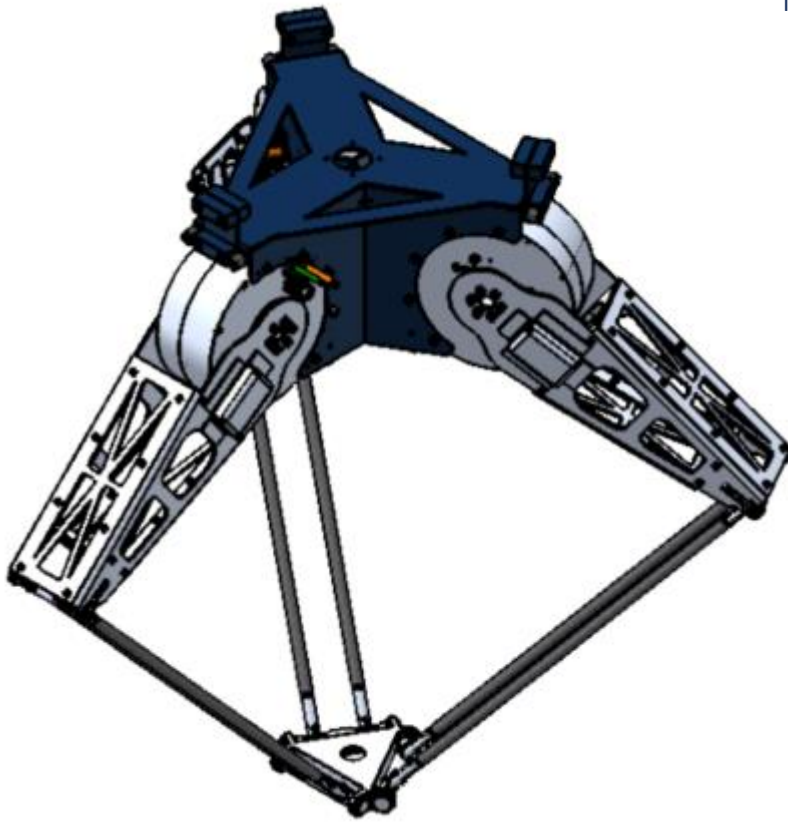
### ROBOT SPECIFICATIONS

Repeatability:	±0.2[mm]
Accuracy encoder:	18 bits
Maximum payload:	3[kg]
Protection class:	Standard IP-54
Ambient temperature:	5°C ≤ ambient temperature ≤ 40°C
Acceleration up to:	5g at 0.5 [kg] payload



## DIRECT-DRIVE DELTA ROBOT

TYPE: BROM-DR-85-4575



### DIRECT DRIVE ADVANTAGES

- 1:1 transmission
- High mechanical efficiency
- High servo stiffness
- Reduced wear
- Maintenance friendly

### EMPLOYABILITY

- Food industry
- Pharmacy
- Agri industry
- PCB pick and place
- Packaging industry
- Educative
- Versatile

### ROBOT ADVANTAGES

- Universal gripper possibility
- Low maintenance
- Modular construction
- Independent of control hardware

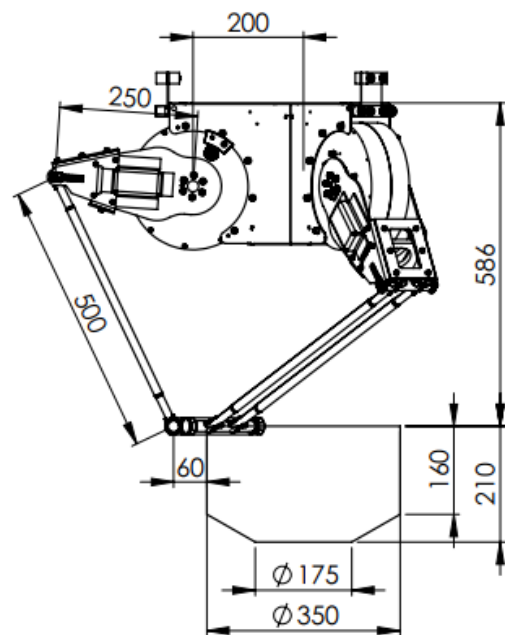
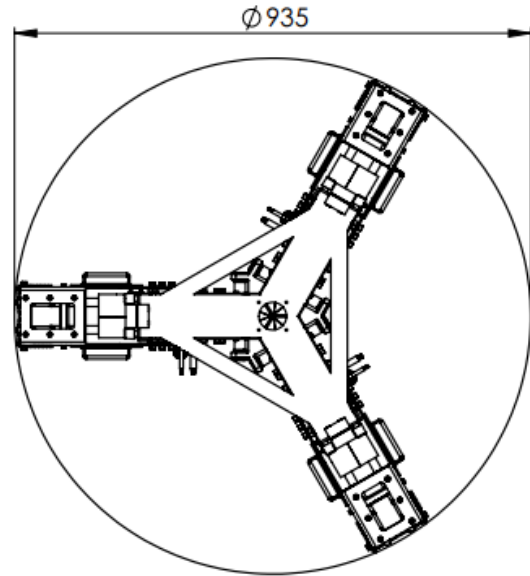
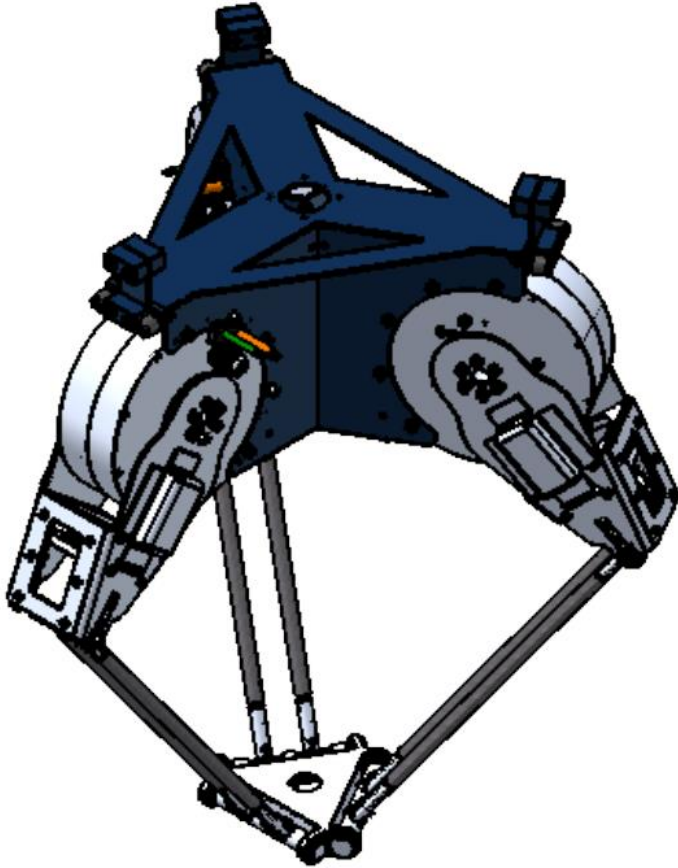
### ROBOT SPECIFICATIONS

Repeatability:	±0.14[mm]
Accuracy encoder:	18 bits
Maximum payload:	3[kg]
Protection class:	Standard IP-54
Ambient temperature:	5°C ≤ ambient temperature ≤ 40°C
Acceleration up to:	12g at 0.5 [kg] payload



## DIRECT-DRIVE DELTA ROBOT

TYPE: BROM-DR-65-2550



### DIRECT DRIVE ADVANTAGES

- 1:1 transmission
- High mechanical efficiency
- High servo stiffness
- Reduced wear
- Maintenance friendly

### EMPLOYABILITY

- Food industry
- Pharmacy
- Agri industry
- PCB pick and place
- Packaging industry
- Educative
- Versatile

### ROBOT ADVANTAGES

- Universal gripper possibility
- Low maintenance
- Modular construction
- Independent of control hardware

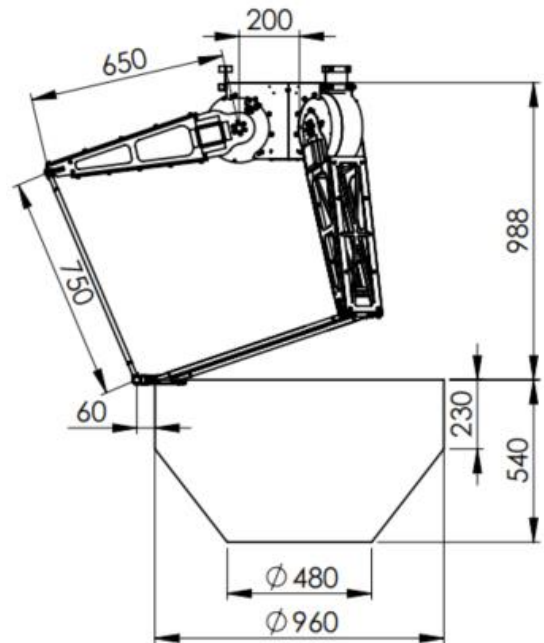
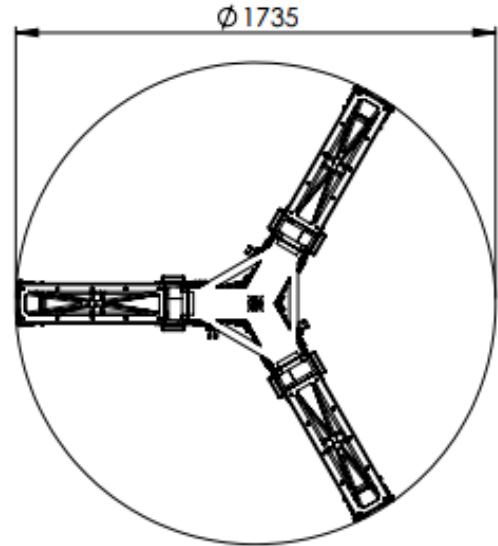
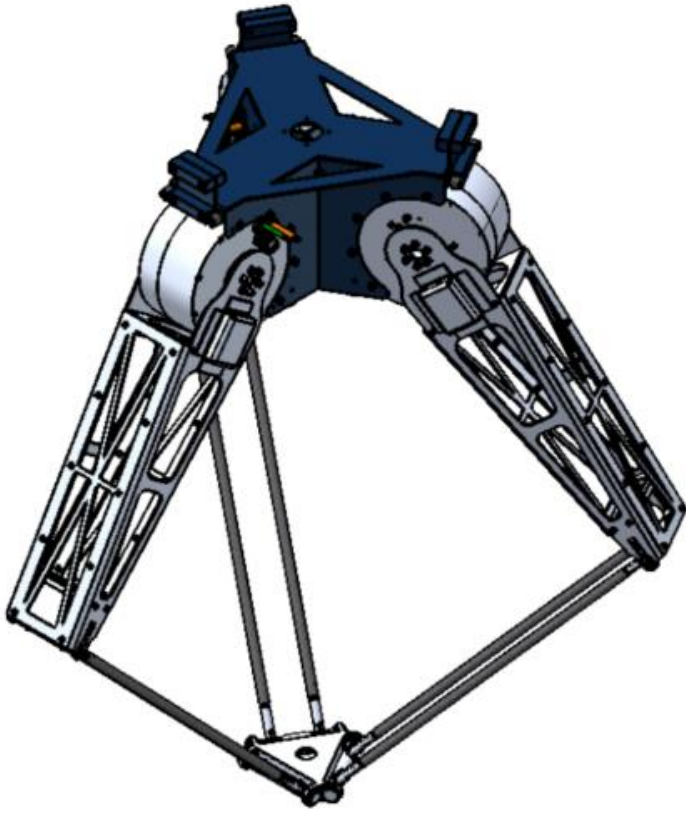
### ROBOT SPECIFICATIONS

Repeatability:	±0.11[mm]
Accuracy encoder:	18 bits
Maximum payload:	3[kg]
Protection class:	Standard IP-54
Ambient temperature:	5°C ≤ ambient temperature ≤ 40°C
Acceleration up to:	13g at 0.5 [kg] payload



## DIRECT-DRIVE DELTA ROBOT

TYPE: BROM-DR-105-6575



### DIRECT DRIVE ADVANTAGES

- 1:1 transmission
- High mechanical efficiency
- High servo stiffness
- Reduced wear
- Maintenance friendly

### EMPLOYABILITY

- Food industry
- Pharmacy
- Agri industry
- PCB pick and place
- Packaging industry
- Educative
- Versatile

### ROBOT ADVANTAGES

- Universal gripper possibility
- Low maintenance
- Modular construction
- Independent of control hardware

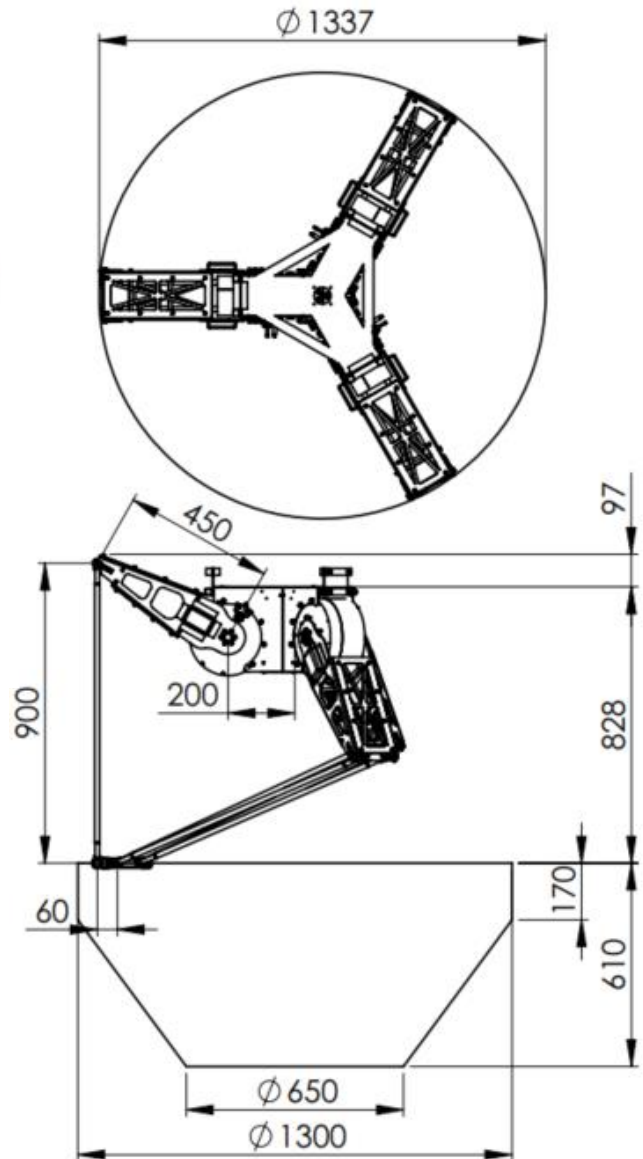
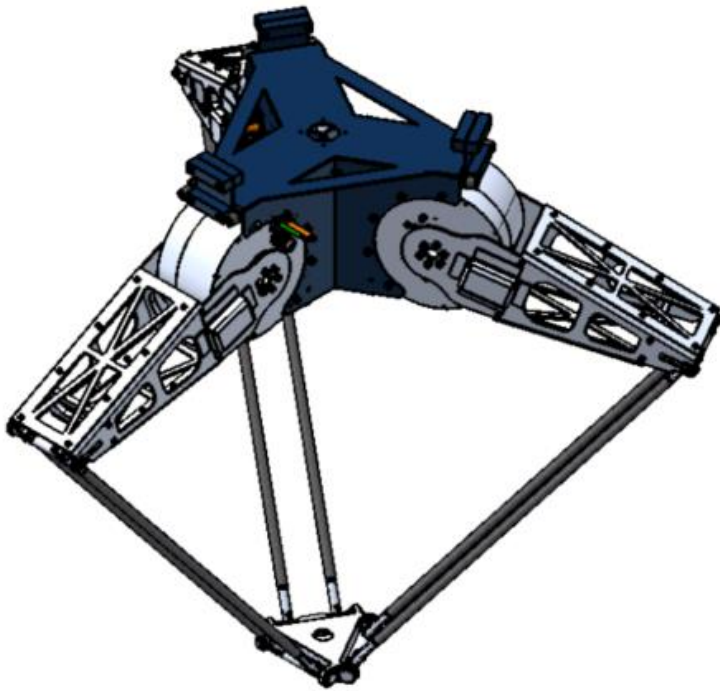
### ROBOT SPECIFICATIONS

Repeatability:	±0.17[mm]
Accuracy encoder:	18 bits
Maximum payload:	3[kg]
Protection class:	Standard IP-54
Ambient temperature:	5°C ≤ ambient temperature ≤ 40°C
Acceleration up to:	10g at 0.5 [kg] payload



## DIRECT-DRIVE DELTA ROBOT

TYPE: BROM-DR-105-4590



### DIRECT DRIVE ADVANTAGES

- 1:1 transmission
- High mechanical efficiency
- High servo stiffness
- Reduced wear
- Maintenance friendly

### EMPLOYABILITY

- Food industry
- Pharmacy
- Agri industry
- PCB pick and place
- Packaging industry
- Educative
- Versatile

### ROBOT ADVANTAGES

- Universal gripper possibility
- Low maintenance
- Modular construction
- Independent of control hardware

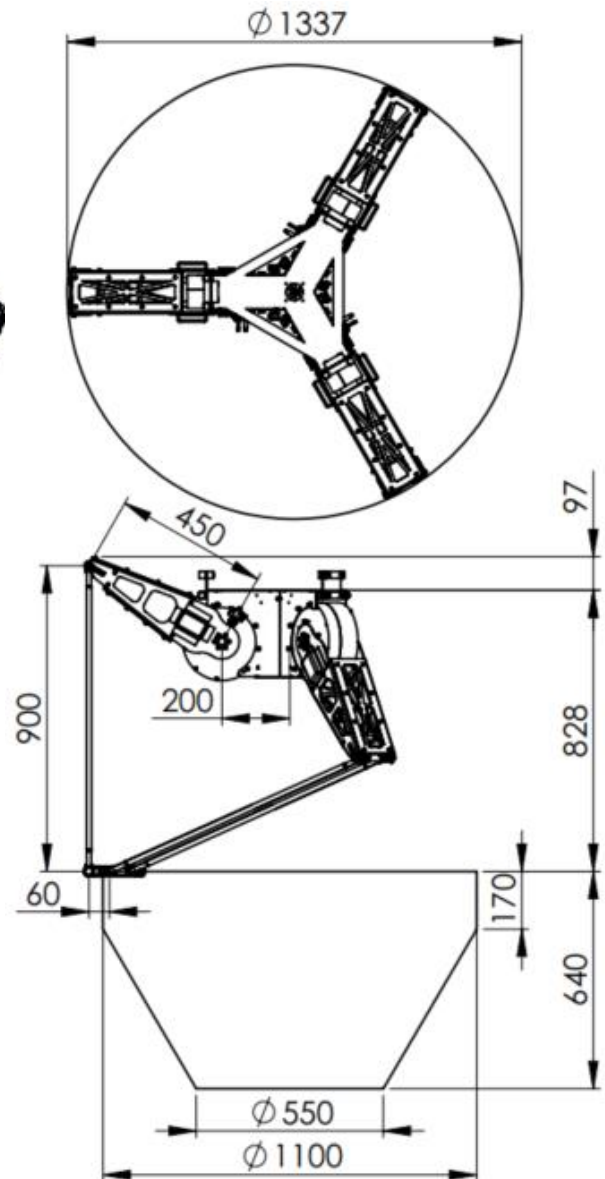
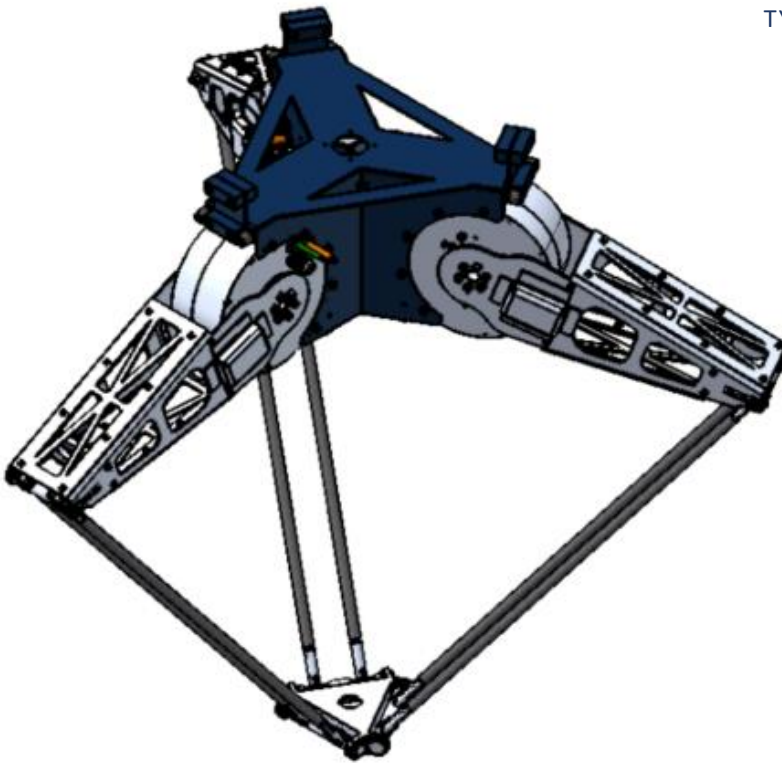
### ROBOT SPECIFICATIONS

Repeatability:	±0.19[mm]
Accuracy encoder:	18 bits
Maximum payload:	3[kg]
Protection class:	Standard IP-54
Ambient temperature:	5°C ≤ ambient temperature ≤ 40°C
Acceleration up to:	12g at 0.5 [kg] payload



## DIRECT-DRIVE DELTA ROBOT

TYPE: BROM-DR-85-4590



### DIRECT DRIVE ADVANTAGES

- 1:1 transmission
- High mechanical efficiency
- High servo stiffness
- Reduced wear
- Maintenance friendly

### EMPLOYABILITY

- Food industry
- Pharmacy
- Agri industry
- PCB pick and place
- Packaging industry
- Educative
- Versatile

### ROBOT ADVANTAGES

- Universal gripper possibility
- Low maintenance
- Modular construction
- Independent of control hardware

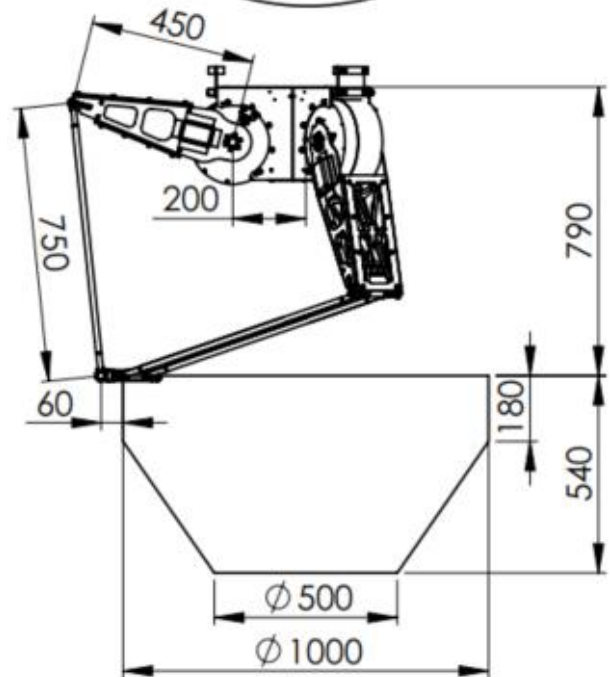
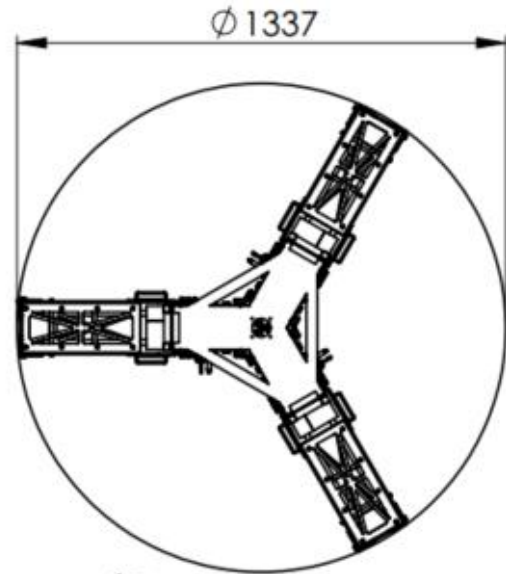
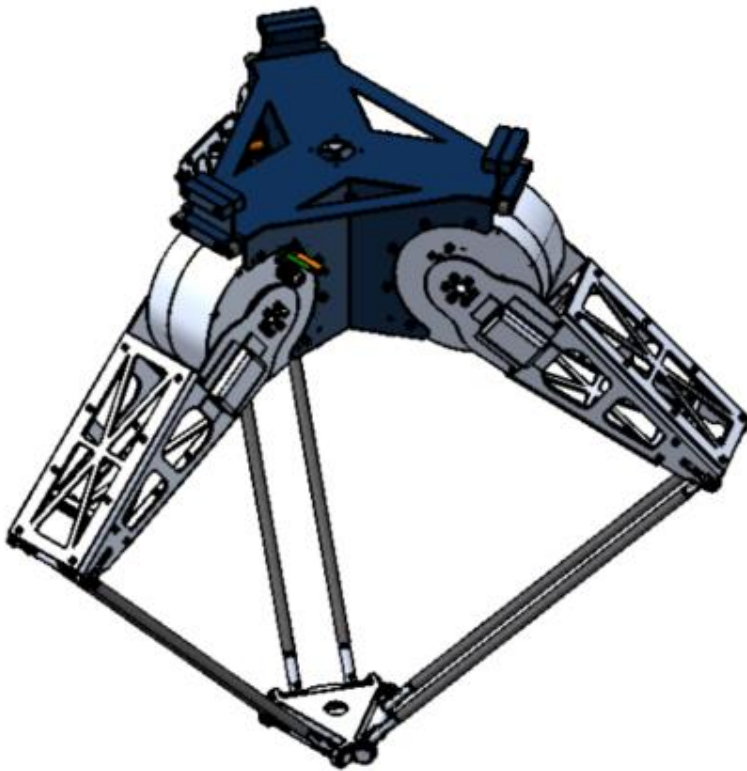
### ROBOT SPECIFICATIONS

Repeatability:	±0.18[mm]
Accuracy encoder:	18 bits
Maximum payload:	3[kg]
Protection class:	Standard IP-54
Ambient temperature:	5°C ≤ ambient temperature ≤ 40°C
Acceleration up to:	10g at 0.5 [kg] payload



## DIRECT-DRIVE DELTA ROBOT

TYPE: BROM-DR-105-4575



### DIRECT DRIVE ADVANTAGES

- 1:1 transmission
- High mechanical efficiency
- High servo stiffness
- Reduced wear
- Maintenance friendly

### EMPLOYABILITY

- Food industry
- Pharmacy
- Agri industry
- PCB pick and place
- Packaging industry
- Educative
- Versatile

### ROBOT ADVANTAGES

- Universal gripper possibility
- Low maintenance
- Modular construction
- Independent of control hardware

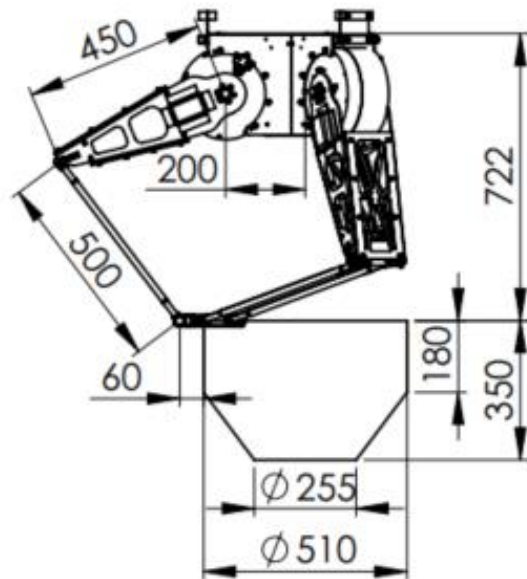
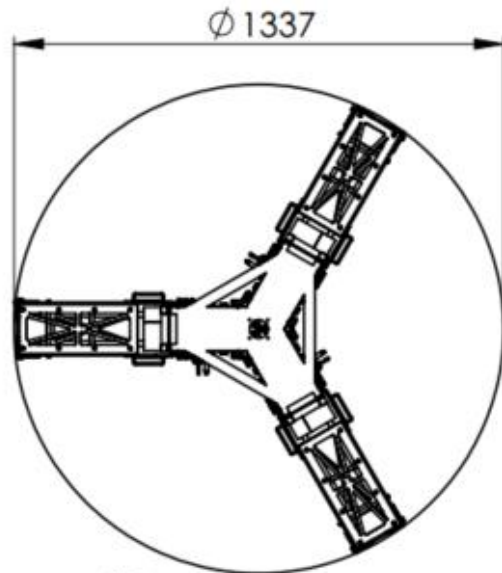
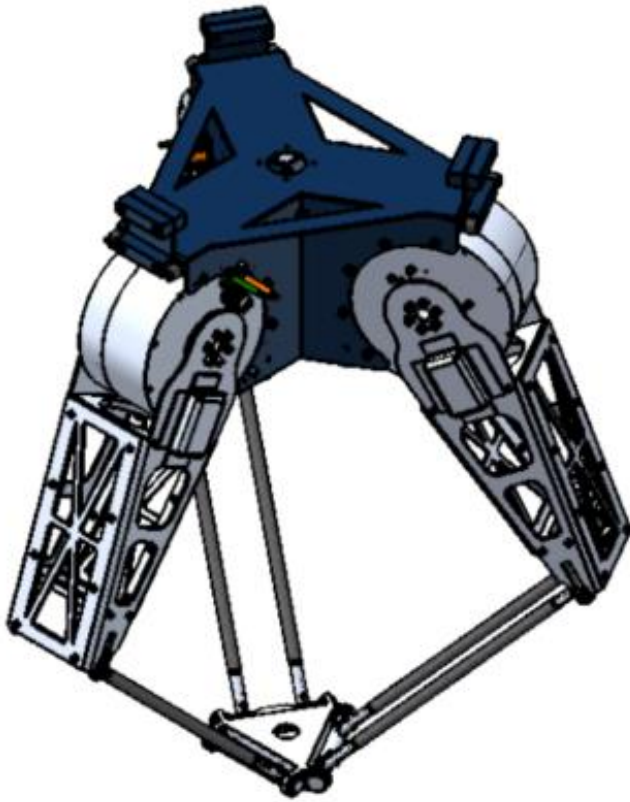
### ROBOT SPECIFICATIONS

Repeatability:	±0.16[mm]
Accuracy encoder:	18 bits
Maximum payload:	3[kg]
Protection class:	Standard IP-54
Ambient temperature:	5°C ≤ ambient temperature ≤ 40°C
Acceleration up to:	12g at 0.5 [kg] payload



## DIRECT-DRIVE DELTA ROBOT

TYPE: BROM-DR-105-4550



### DIRECT DRIVE ADVANTAGES

- 1:1 transmission
- High mechanical efficiency
- High servo stiffness
- Reduced wear
- Maintenance friendly

### EMPLOYABILITY

- Food industry
- Pharmacy
- Agri industry
- PCB pick and place
- Packaging industry
- Educative
- Versatile

### ROBOT ADVANTAGES

- Universal gripper possibility
- Low maintenance
- Modular construction
- Independent of control hardware

### ROBOT SPECIFICATIONS

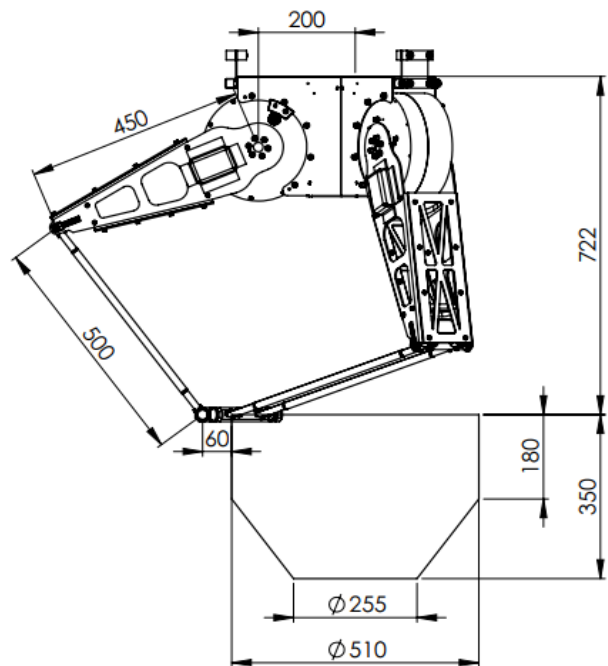
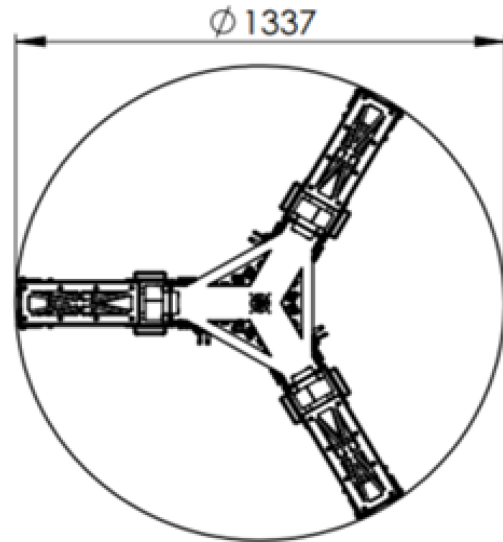
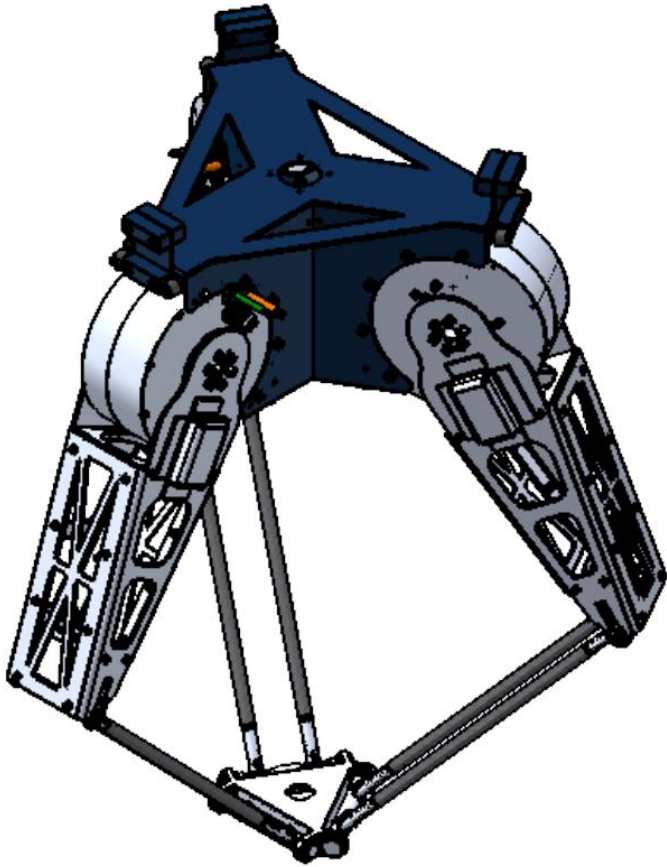
Repeatability:	±0.06[mm]
Accuracy encoder:	18 bits
Maximum payload:	3[kg]
Protection class:	Standard IP-54
Ambient temperature:	5°C ≤ ambient temperature ≤ 40°C
Acceleration up to:	7g at 0.5 [kg] payload





## DIRECT-DRIVE DELTA ROBOT

TYPE: BROM-DR-85-4550



### DIRECT DRIVE ADVANTAGES

- 1:1 transmission
- High mechanical efficiency
- High servo stiffness
- Reduced wear
- Maintenance friendly

### EMPLOYABILITY

- Food industry
- Pharmacy
- Agri industry
- PCB pick and place
- Packaging industry
- Educative
- Versatile

### ROBOT ADVANTAGES

- Universal gripper possibility
- Low maintenance
- Modular construction
- Independent of control hardware

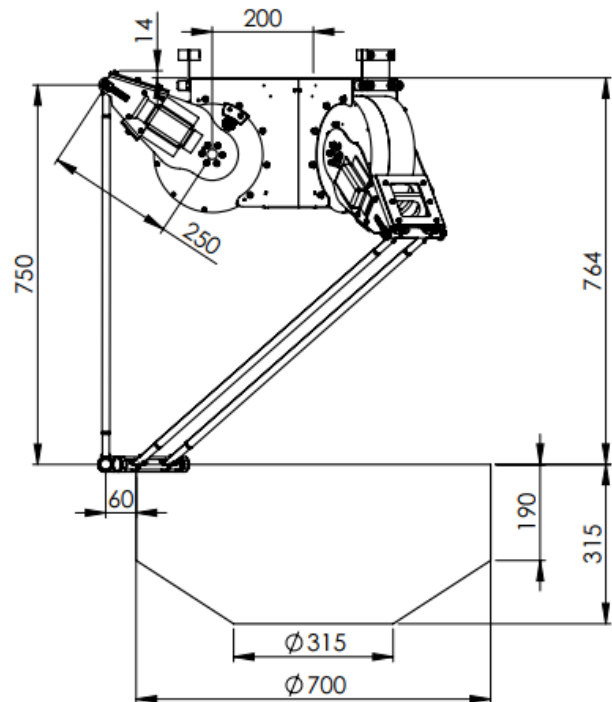
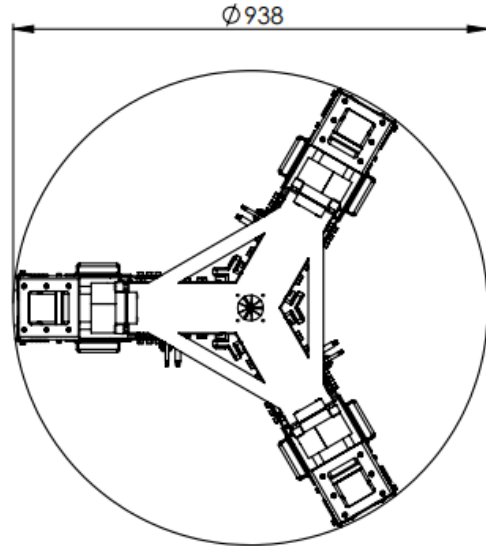
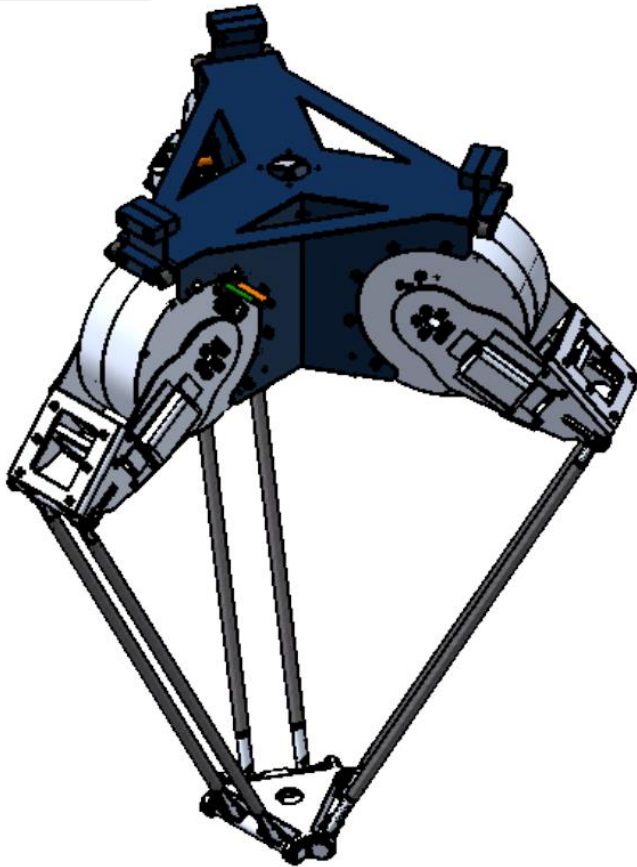
### ROBOT SPECIFICATIONS

Repeatability:	±0.06[mm]
Accuracy encoder:	18 bits
Maximum payload:	3[kg]
Protection class:	Standard IP-54
Ambient temperature:	5°C ≤ ambient temperature ≤ 40°C
Acceleration up to:	5g at 0.5 [kg] payload



## DIRECT-DRIVE DELTA ROBOT

TYPE: BROM-DR-85-2575



### DIRECT DRIVE ADVANTAGES

- 1:1 transmission
- High mechanical efficiency
- High servo stiffness
- Reduced wear
- Maintenance friendly

### EMPLOYABILITY

- Food industry
- Pharmacy
- Agri industry
- PCB pick and place
- Packaging industry
- Educative
- Versatile

### ROBOT ADVANTAGES

- Universal gripper possibility
- Low maintenance
- Modular construction
- Independent of control hardware

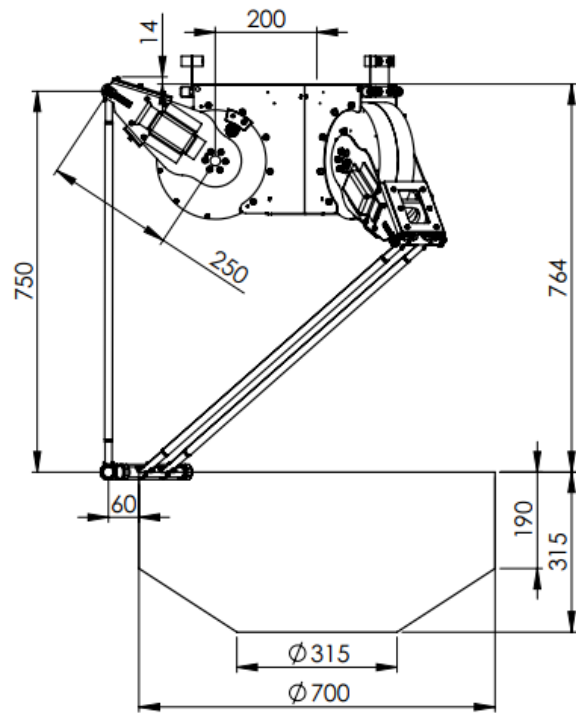
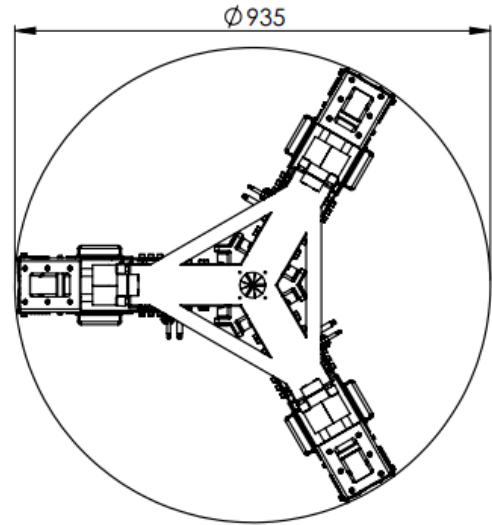
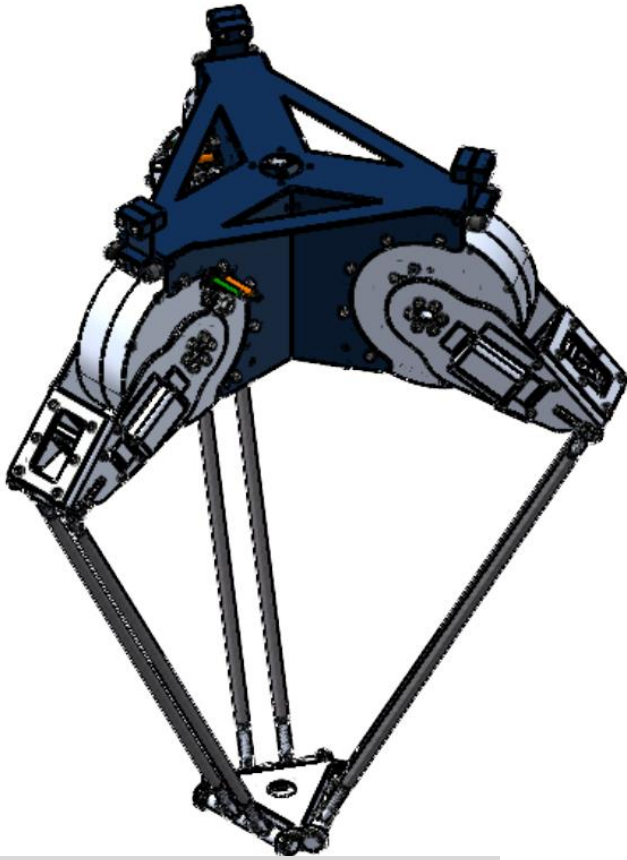
### ROBOT SPECIFICATIONS

Repeatability:	±0.16[mm]
Accuracy encoder:	18 bits
Maximum payload:	3[kg]
Protection class:	Standard IP-54
Ambient temperature:	5°C ≤ ambient temperature ≤ 40°C
Acceleration up to:	18g at 0.5 [kg] payload



## DIRECT-DRIVE DELTA ROBOT

TYPE: BROM-DR-65-2575



### DIRECT DRIVE ADVANTAGES

- 1:1 transmission
- High mechanical efficiency
- High servo stiffness
- Reduced wear
- Maintenance friendly

### EMPLOYABILITY

- Food industry
- Pharmacy
- Agri industry
- PCB pick and place
- Packaging industry
- Educative
- Versatile

### ROBOT ADVANTAGES

- Universal gripper possibility
- Low maintenance
- Modular construction
- Independent of control hardware

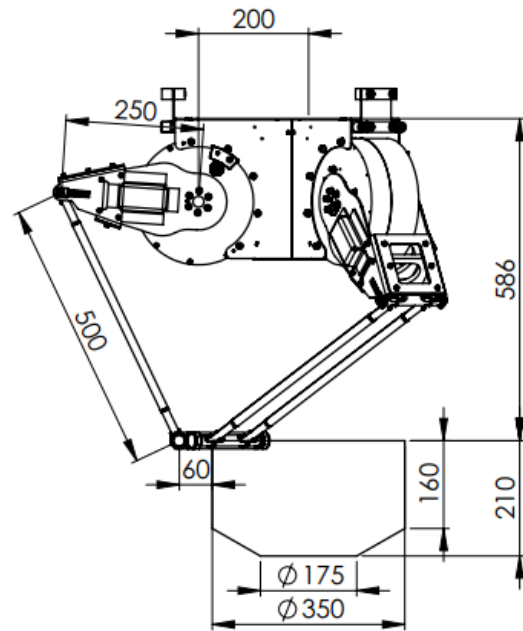
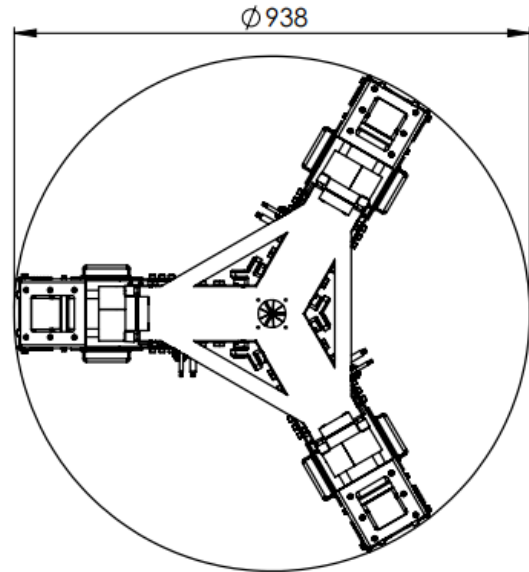
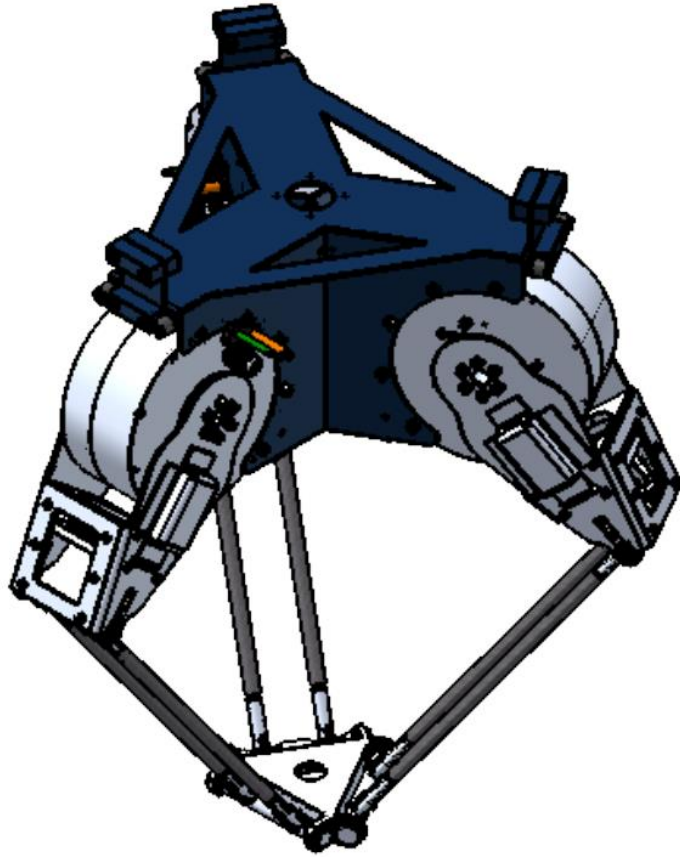
### ROBOT SPECIFICATIONS

Repeatability:	±0.16[mm]
Accuracy encoder:	18 bits
Maximum payload:	3[kg]
Protection class:	Standard IP-54
Ambient temperature:	5°C ≤ ambient temperature ≤ 40°C
Acceleration up to:	12g at 0.5 [kg] payload



## DIRECT-DRIVE DELTA ROBOT

TYPE: BROM-DR-85-2550



### DIRECT DRIVE ADVANTAGES

- 1:1 transmission
- High mechanical efficiency
- High servo stiffness
- Reduced wear
- Maintenance friendly

### EMPLOYABILITY

- Food industry
- Pharmacy
- Agri industry
- PCB pick and place
- Packaging industry
- Educative
- Versatile

### ROBOT ADVANTAGES

- Universal gripper possibility
- Low maintenance
- Modular construction
- Independent of control hardware

### ROBOT SPECIFICATIONS

Repeatability:	±0.13[mm]
Accuracy encoder:	18 bits
Maximum payload:	3[kg]
Protection class:	Standard IP-54
Ambient temperature:	5°C ≤ ambient temperature ≤ 40°C
Acceleration up to:	19g at 0.5 [kg] payload